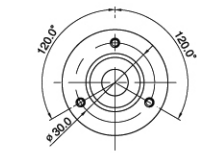


Mechanical Specification	Starting Torque	0.02 N · m Max.
	Moment of inertia	4×10^{-6} kg · m ² Max
Permissible Shaft Loading	Radial : With in 30 N, Thrust : With in 20 N	
	Max. Permissible Revolution	5000 r/min
Insulation Resistance	Over 100 M Ω (Base on 500 V d.c mega between terminal and case)	
Dielectric strength	800 V a.c (Between terminal and case at 60Hz for 1 minute)	
Vibration Resistance	10 - 55Hz (Cycle for 1 minute), Double amplitude width: 1.5mm, Each X-Y-Z direction for 2 hours	
Shock Resistance	490 % ² Max.	
Ambient Temperature	-10 ~ 70 °C(Without condensation), Storage Temperatur : -25 ~ 85 °C	
Ambient Humidity	35 ~ 85 % R.H.	
Protection	Protection IP 50 (IEC Standard)	
Wire Specification	5 P, ϕ 5.0 mm, Length : 1.5 m, Shield cable(Option : 2 m, 8 m, 10 m) (Line Driver Type : 8P, ϕ 5.0 mm, Length : 1.5 m, Shield cable)	
Weight	170 g	
Accessory	Spring Bracket	

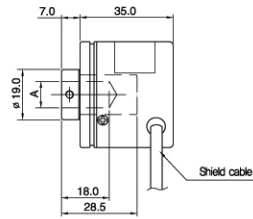
Dimension

[unit : mm]

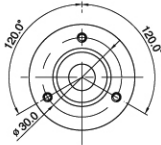
■ ϕ 40 Hollow Built in Shaft



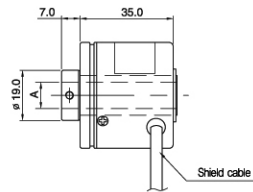
A	ϕ 6	ϕ 8	ϕ 10	ϕ 12
B	ϕ 19		ϕ 17	



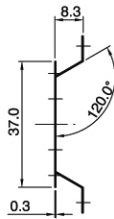
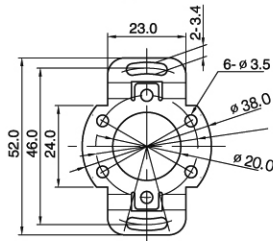
■ ϕ 40 Hollow Shaft



A	ϕ 6	ϕ 8	ϕ 10	ϕ 12
B	ϕ 19		ϕ 17	

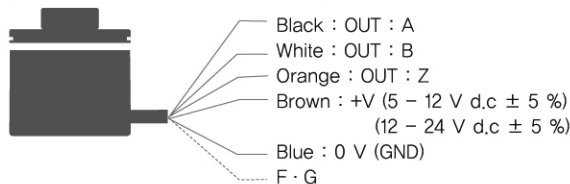


■ Accessory

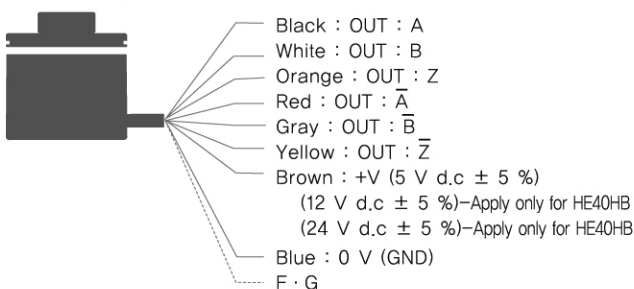


Wiring Diagram

■ Voltage output, Totem Pole output, Open collector output



■ Line Driver Output

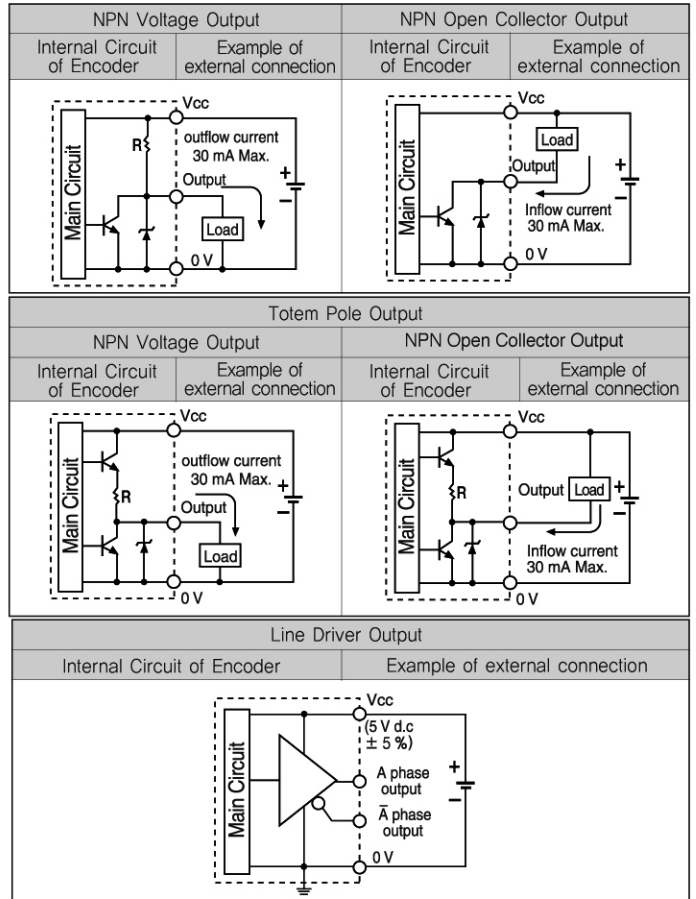


※ Please insulate unused lines

※ Metal case of encoder and Shield line must be ground connection.

※ Hollow Built-in Shaft : Same connection way as Hollow Shaft.

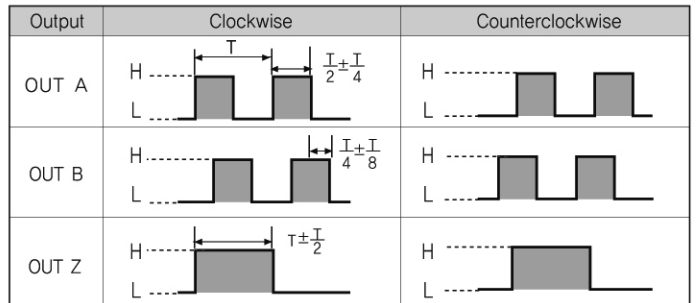
Control output circuit diagram



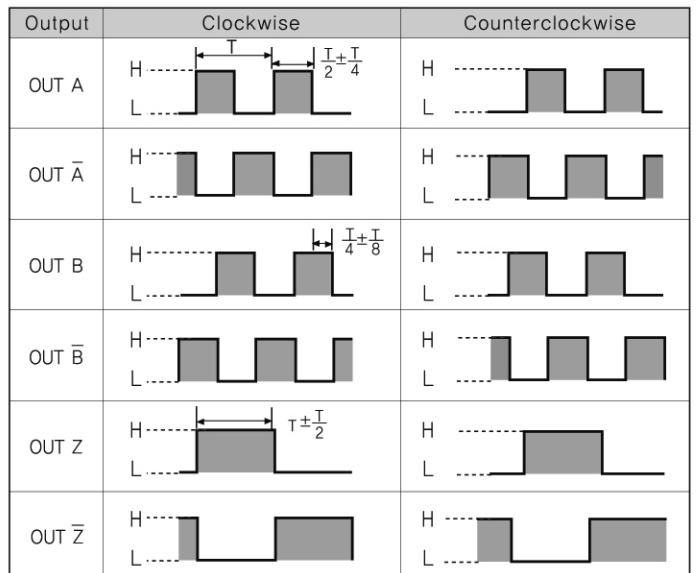
※ The output circuit of A, B, Z phase (Line drive output A, A-bar, B, B-bar, Z, Z-bar phase) is same.

Output wave

■ NPN Voltage output, NPN Open Collector Output, Totem Pole output



■ Line Driver Output



Clockwise (CW): When you are looking at the shaft of the product, it is turning in a clockwise direction.
Counterclockwise (CCW): When you are looking at the shaft of the product, it is turning in a counterclockwise.